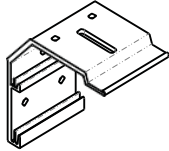

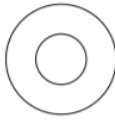
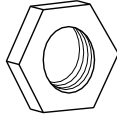
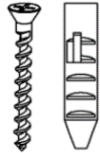


Thank you for choosing the **Manual Grande® 2 Series** projection screen! This large size manual pull-down screen includes our **GREENGUARD GOLD®** and **ISF Certified MaxWhite® 2** front projection material. The **MaxWhite® 2** best performs under a light controlled environment since it is a matte white surface.

Hardware Parts List				
A. Wall/Ceiling Bracket x 3 pcs	B. Eyebolt x 3 pcs	C. Washer x 6 pcs	D. Nut x 6 pcs	E. Screw and Dry-wall anchor x 6 sets (for mounting screen)
				

Note: Wall screws included with this product are complimentary and may not be adequate for all mounting surfaces. Consult with a professional installer or hardware store for proper mounting screws and anchors.

Regardless of the mounting method, the screen should be securely supported so that the vibration or pulling on the viewing surface will not cause the screen case to become loose or fall. The installer must ensure that proper mounting hardware and the fasteners used are of adequate strength and suitable for the mounting surface.

Screen Installation

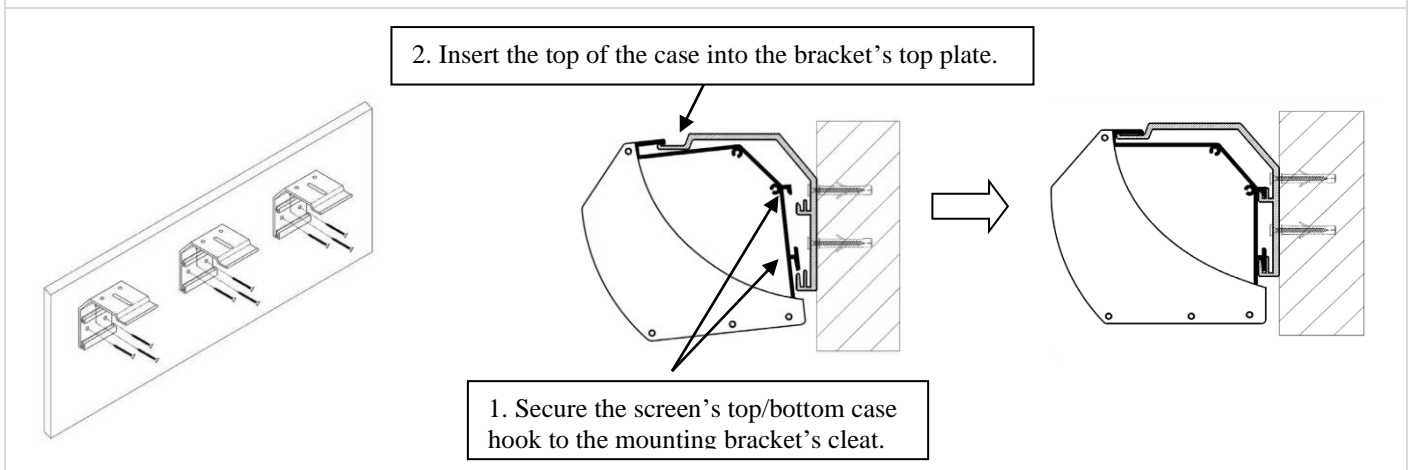
Note: 2 or more people are required for a safety installation.

A. Flush Wall Installation

1. Determine where the screen will be installed. Mark the screw hole locations for the brackets at the desired height.
2. Drill the holes and insert the *dry-wall anchor (E)* if not installing directly to a wood stud. Otherwise use the wood screw and install the brackets.

Note: Brackets should be fastened to wall studs. Concrete or brick walls require special fasteners/anchors and are not included.

3. Once the brackets have been properly installed and leveled, hang the screen as illustrated below. Be sure the case is fully seated on the bracket and slide it into position if needed to complete the installation.

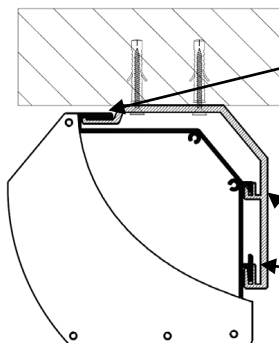
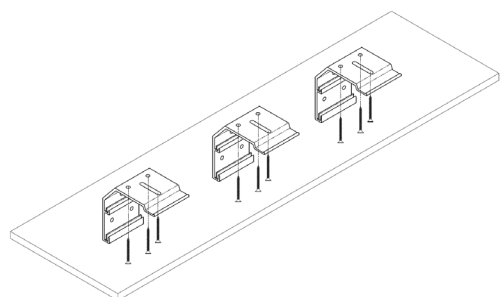


B. Flush Ceiling Installation

1. Determine where the screen will be installed and mark the screw hole locations for the brackets.
2. Drill the holes and insert the *dry-wall anchor (E)* if not installing directly to a wood stud. Otherwise use the wood screw and install the brackets.

Note: Brackets should be fastened to wall studs. Concrete or brick walls require special fasteners/anchors and are not included.

3. Once the brackets have been properly installed and leveled, hang the screen as illustrated below. Be sure the case is fully seated on the bracket and slide it into position if needed to complete the installation.



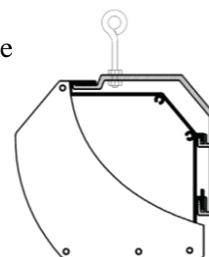
2. Insert the top of the case into the bracket's top plate.

1. Secure the screen's top/bottom case hook to the mounting bracket's cleat.

C. Suspended Ceiling Installation (Additional hardware required)

2. Attach the *Eyebolt (B)* onto the *Mounting Bracket (A)* by using one *Nut (D)* and the top of the *Eyebolt* and insert in thru the bracket top hole and secure it with another Nut at the bottom.

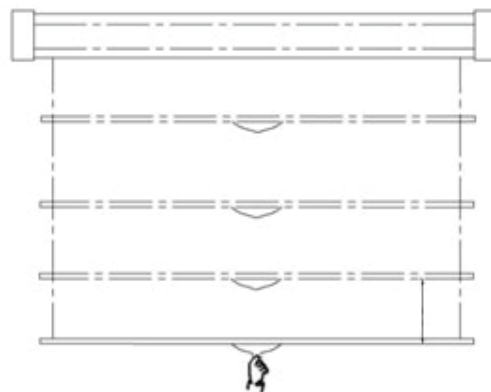
3. Hang the screen onto the ceiling using a chain or snap link (not included).



Screen Operation

1. Pull the screen down from the lanyard or from the handle only at a 90-degree angle. The screen is designed to lock at different intervals. To achieve this, make sure to pull straight down and allowing the screen to come up to lock into place. **Do not attempt to pull the screen down by the surface or touch the screen, as it will damage the screen and void the warranty.**

2. To retract the screen, simply pull the screen down more than two inches with a quick snap of the wrist and guide the screen into the housing.



Attention: When retracting, always pull the screen down at a 90-degree angle. If ever the screen feels stuck, keep in mind that the screen's mechanism is new and needs to be run up/down a few times to loosen up. If this happens, carefully, with a little force, yank the screen straight down to unlock the mechanism.

RETRACTION TIP: If you are not able to pull the screen down two inches when attempting to retract it, give the screen a quick yank downwards with a little bit of force. Please be sure to not stand directly under the housing of the unit when yanking down on the screen

For more information, technical support or your local Elite ProAV contact, please visit www.eliteproav.com