

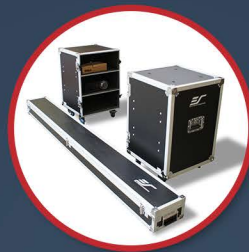


**5 YEAR WARRANTY**



## KESTREL STAGE SERIES

The Kestrel Stage Series is a large venue portable, free standing electric projector screen. It is ideal for Rental & Staging or other commercial (Pro AV) applications where a mobile projection screen would be required. It is integrated into a sturdy wheeled stage case that has handles for easy transport and set-up. As an added value, a matching roadie flight-case with detachable velvet skirt is included to complete the arrangement. The flight-case combines with the cased-screen and skirt to create a professional-grade mobile projection display. Models also available without the ATA Stage Travel Case



### Screen Material

- MaxWhite® Fiberglass (FG) screen material with 1.1 Gain
- 180° wide viewing angle
- Active 3D, 4K Ultra HD, and HDR ready
- Compatible with Standard-throw Projectors ONLY
- Border masking frames the projection surface
- Material has black-backing
- Flame Resistant: Complies with NFPA 701 Standards
- GREENGUARD® and GREENGUARD® Gold Certified | UL 2818
- Available in diagonal size 100" in 16:9 format
- 5-year limited manufacturer's warranty

### Design & Operation

- Rises and lowers by motorized precision "scissor-backed" cross spring risers
- Integrated stage case and wheeled-design includes handles on each side for easy transport and handling
- Black drape (skirt) included for enhanced aesthetics
- Detachable wheeled flight-case with internal storage shelves
- Screen assembly attaches to the flight-case halves when set up for video mode
- Wheel locking mechanisms
- In-line UP/STOP/DOWN control switch and IR/RF remotes included

info@eliteproav.com



www.eliteproav.com